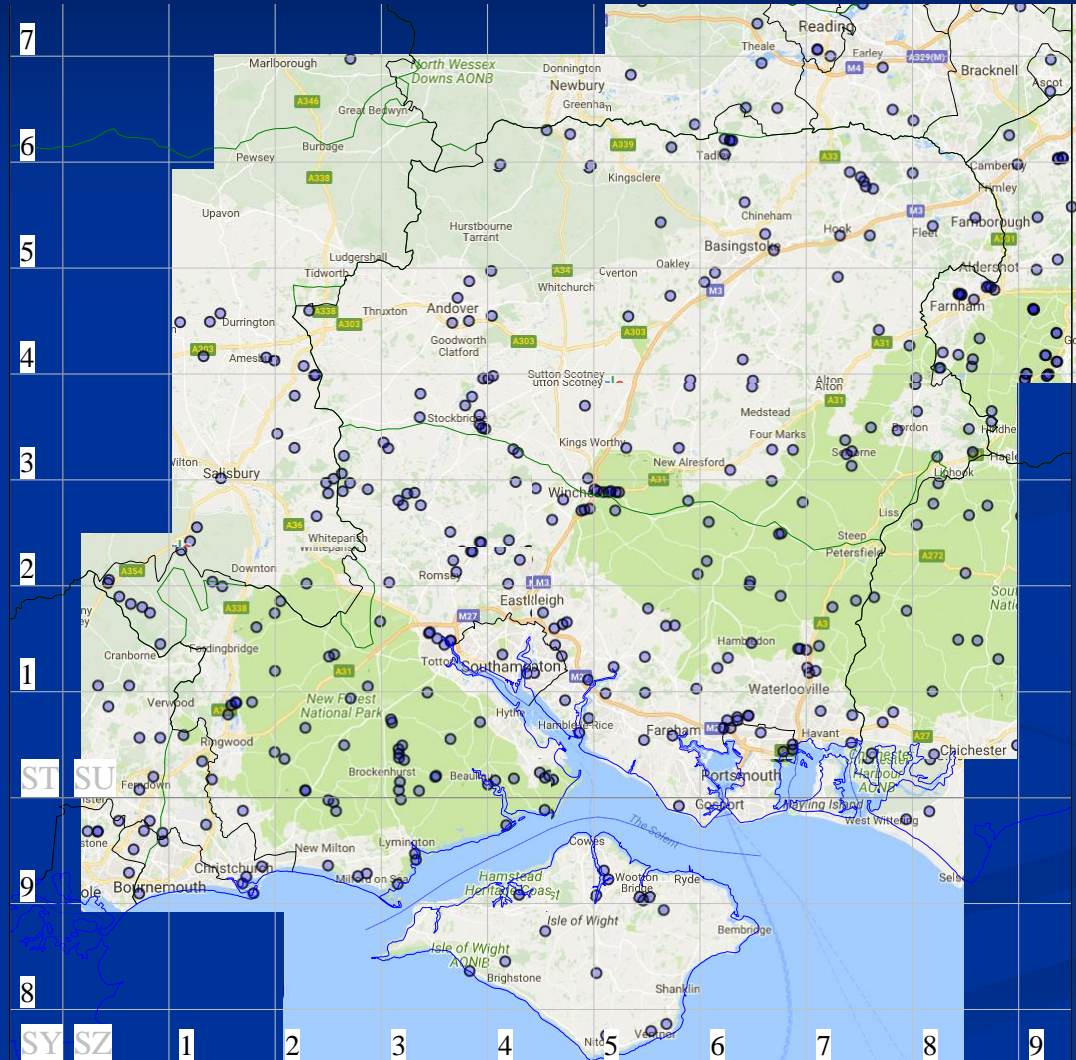


Butterfly
Conservation

Hampshire & Isle of Wight Butterfly Transect Recorders' Meeting 17 February 2018



Hampshire & Isle of Wight Butterfly Transect Sites





Transects ▾

Transect News

Introduction ▶

25 Year Trends

Annual Trend Tables

Getting Involved

Transect Locations

Recorder Conference

Training Days

Risk Assessments

Transect Contacts

Area Groups ▶

UKBMS Resources

Additional Hants/IoW
Resources

[2015](#)

[2009](#)

Copyright © Butterfl

Butterfly Conservation: Com
ered Office: Manor Yard, E
Charity registered in E

Butterfly Conservation

lists in 1968 following the alarming
ty aimed to reverse. Our vision is
Butterflies are beautiful and
ental change makes them valuable

Reserves



Butterfly Conservation has over
25 reserves across the UK,
including 3 in Hampshire: Yew
Hill, Magdalen Hill Down and
Bentley Station Meadow.
[More about our reserves...](#)

Become a
MEMBER
today and start
making a difference.



[Reserves Facebook page](#)
[Hampshire Facebook page](#)
[Isle of Wight Facebook
page](#)

News

- 13 Jan 2018: Football Admiral at Fratton Park
- 10 Jan 2018: Red Admiral out in Axmansford
- 10 Jan 2018: Marsh Fritillary larval activity
- 28 Dec 2017: Sub Zero Admiral in Andover
- 06 Dec 2017: Purple Hairstreak ova
- 04 Dec 2017: Brimstone at Magdalen Hill Down, Winchester
- 01 Dec 2017: Red Admiral on the Wing in Gosport!
- 25 Nov 2017: Alresford
- 10 Nov 2017: Red Admiral

pton from 6-8 April 2018. Take the
the ecology and conservation of

More [here ...](#)

The Wider Countryside Butt

<http://www.hantsiow-butterflies.org.uk/>



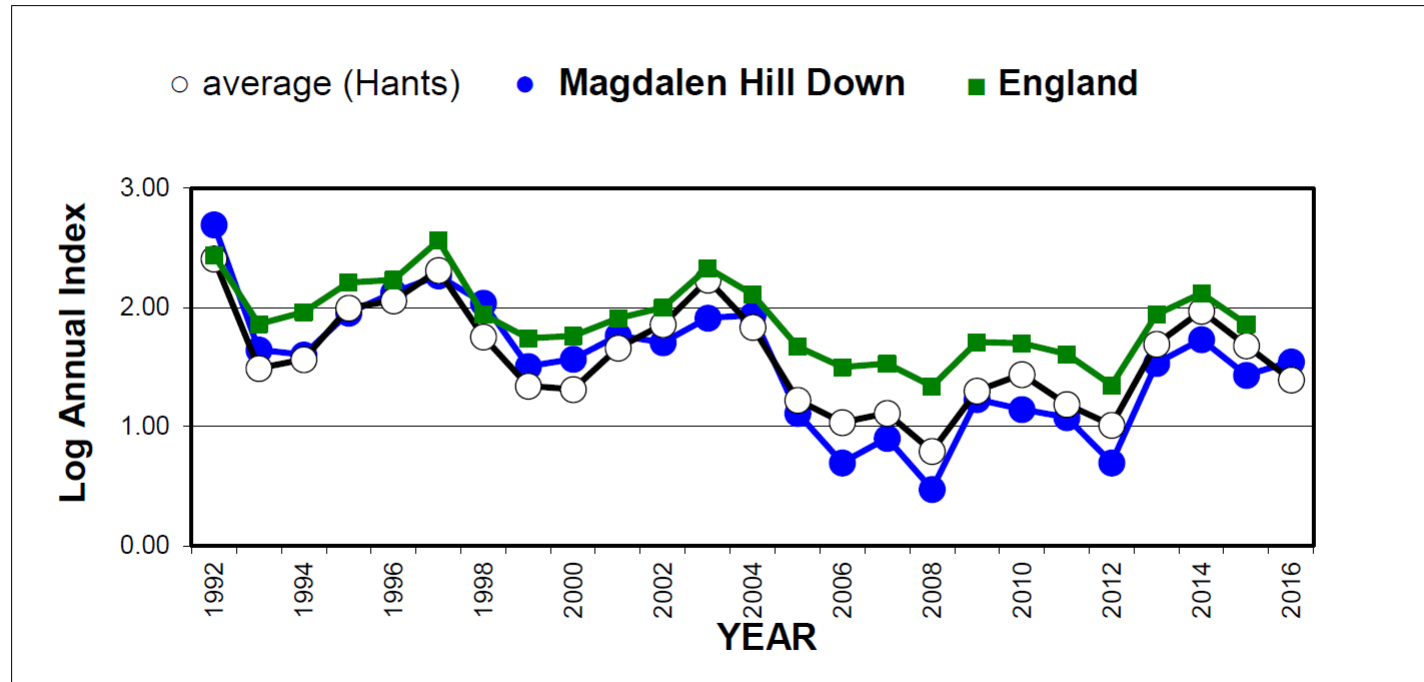
Transect 25-year Trends

A series of graphs showing the 25 year Annual Index trends for all Hampshire & Isle of Wight species, except Essex Skipper and Glanville Fritillary, for which there is currently insufficient data. The graphs show long-term Hants & Isle of Wight trends compared with national trends, and including graphs with trend lines and linear regression coefficients. For some species, individual site trends are also shown.

Posted by Andy & Linda Barker (Transect Co-ordinators)

[25-Year Trend graphs \(1992-2016\) May 2017](#)

Small Tortoiseshell





Annual Trend Tables

Tabulated annual trends for all butterfly species recorded on Hampshire & Isle of Wight transects. For a given year relative to the previous, these tables show for each species, how many sites increased by more than 20%, how many decreased by more than 20% and how many showed little change.

[2016](#) [2015](#) [2014](#) [2013](#) [2012](#) [2011](#)
[2010](#) [2009](#) [2008](#) [2007](#)



**Butterfly
Conservation**

Hampshire & Isle of Wight Branch 2015-2016 species trends (Hants & Isle of Wight) based on 113 transects with data for both years

	Combined transect trend	>20% DECREASE 2016	-20% to +20% NO CHANGE	>20% INCREASE 2016	0 /16 1+/15 LOSS	1+/16 0/15 GAIN
Small Skipper	-64%	-	-	-	-	-
Essex Skipper	-73%	-	-	-	-	-
Small/Essex Skipper		81	14	8	11	-
Large Skipper	-52%	65	15	20	8	8